

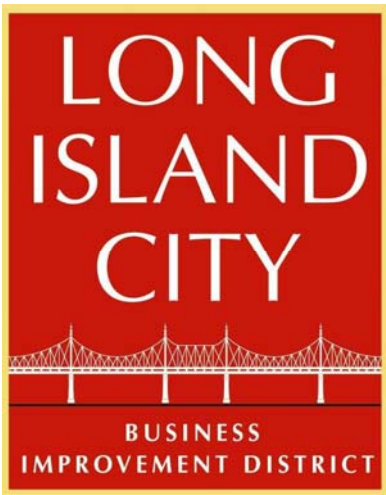
29-10 Thomson Avenue, 9th Floor
Long Island City, N.Y. 11101
Phone: (718) 786-5300 • Fax: (718) 937-1799

The Long Island City BID is dedicated to supporting businesses and property owners in the commercial core of the one of New York City's most vibrant mixed-use districts. The BID provides supplementary security and sanitation services within our District, and carries out community development and marketing initiatives that benefit the greater Long Island City neighborhood. As a public-private partnership run by local property owners, the LICBID is eager to assist any business that calls Long Island City home, or would like to in the future.

CORE SERVICES

- **Sanitation** - removal of over 390 tons of refuse from the sidewalks and streets of the District annually
- **Security** - unarmed security patrols until 11 p.m. nightly
- **Graffiti** - illegal graffiti targeted in cooperation with the Borough President's office and 311-NYC
- **Marketing** - promotional events and a banner program throughout the district, an online map of LIC amenities, and a recent pull-out guide to LIC in *Time Out New York*
- **Business Support** - relocation assistance, orientations to LIC, and information about economic and tax incentives
- **Government Partnership** - the BID works with local Community Boards, the Borough President, the City Council, the Mayor, and the Depts. of Economic Development and Small Business Services to advocate for the interests of LIC
- **Culture** - active participation in arts associations, events, and individual meetings with LIC cultural organizations
- **Information** - the BID is a one-stop source of information about capital improvements, neighborhood happenings, and business news in LIC

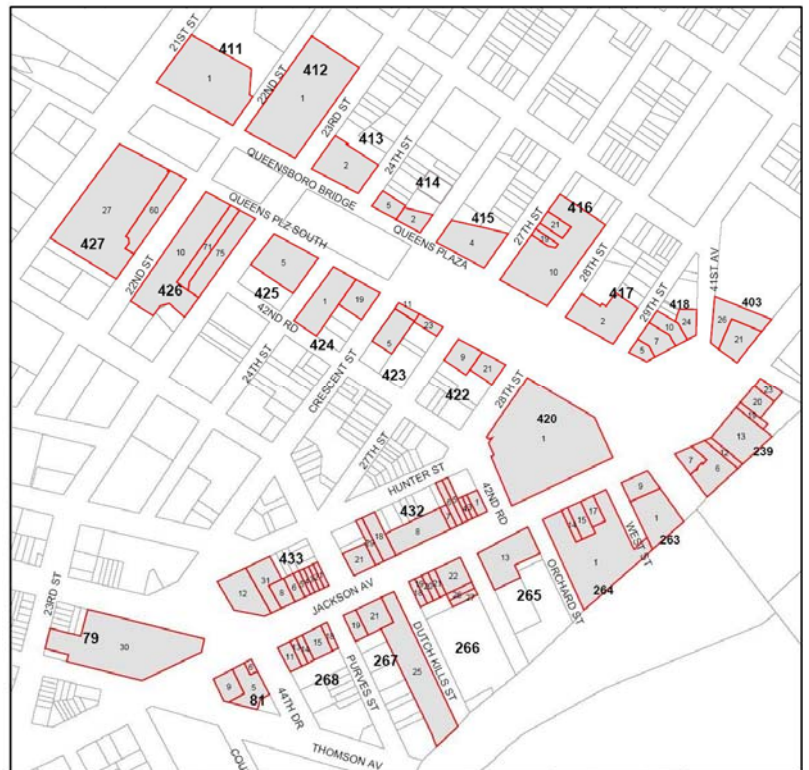




The Long Island City BID is comprised of much of the area that was rezoned as New York City's fourth central business district in 2001. Currently, the District consists of properties with frontage on Jackson Avenue, from Court Square north to Queens Plaza, and along Queens Plaza west to 21st Street. The seven subway lines in the District provide a direct connection to Midtown Manhattan, Grand Central Terminal, and Penn Station. The Queensboro Bridge is the principal gateway to Queens Plaza and Long Island City.

Long Island City BID Map

LIC Subway Access



29-10 Thomson Avenue, 9th Floor
 Long Island City, N.Y. 11101
 Phone: (718) 786-5300 • Fax: (718) 937-1799